



Georgia Tech College of Engineering

# School of Chemical and Biomolecular Engineering



## Think Big. Solve Big.

The School of Chemical and Biomolecular Engineering at Georgia Tech (ChBE@GT) seeks to *define* and *solve* the challenges that will face the world of tomorrow.

We are a world leader in educating the next generation of chemical and biomolecular engineers, graduating more students than any other program in the country. The depth and breadth of our students' experiences ensures they are well prepared to succeed in academia or industry; our alumni are in leadership positions in some of the most influential universities and organizations around the world.

One of the nation's most research-intensive academic institutions, we strive to be a leading contributor to solving the most critical and complex challenges of our time – and those of tomorrow. Our research portfolio encompasses an array of focal areas from clean energy generation to direct

carbon dioxide capture; from innovative agricultural processes to air quality control; from novel approaches in drug delivery to new discoveries in neuroscience imaging.

The following pages offer a glimpse into ChBE's vision to transform tomorrow. With your financial support, we can continue to advance the field of chemical and biomolecular engineering through our world-class education and research.



[chbe.gatech.edu](http://chbe.gatech.edu)

# ChBE at a Glance

#3

**Undergraduate  
ChBE program  
in the nation**

*U.S. News & World Report,  
2024 Best Colleges  
#1 among publicly-funded institutions*

#5

**Graduate  
ChBE program  
in the nation**

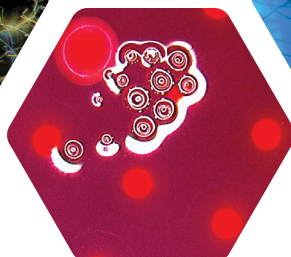
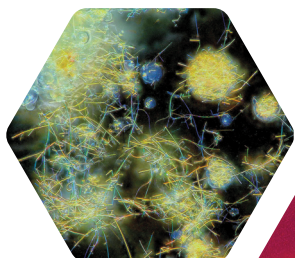
*U.S. News & World Report,  
2025 Best Colleges  
#1 among publicly-funded institutions*

► [chbe.gatech.edu](https://chbe.gatech.edu)

## OVERVIEW

### Degrees Offered

- BS in Chemical and Biomolecular Engineering
- MS in Chemical Engineering
- PhD in Chemical Engineering
- PhD in Bioengineering
- PhD in Machine Learning



### Research Areas

- Biotechnology
- Complex Systems
- Energy and Sustainability
- Materials and Nanotechnology

## STUDENTS

~670

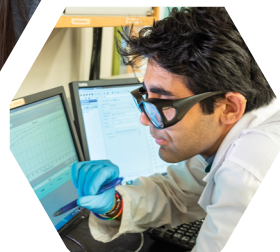
undergrad  
students

240

PhD  
students

23

MS  
students



60%

of students are involved in  
undergraduate research  
before they graduate

## FACULTY



45

academic  
faculty members

► 2 affiliated faculty

► 4 non-tenure track faculty

9

Faculty members  
elected to the National  
Academy of  
Engineering  
(5 emeritus)

14

AIChE Fellows  
serving on the faculty

17

ChBE faculty members  
hold major editorial  
positions with top  
technical journals

22

National Science  
Foundation CAREER Award win-  
ners on the faculty





*The School of Chemical and Biomolecular Engineering prioritizes...*

## Teaching the Next Generation

We aspire to lead the transformation of chemical and biomolecular engineering education, not just in the numbers of students who earn degrees but also in the diversity of their backgrounds and breadth of their experiences. Coupled with our leading academics and exceptional enrichment programming, ChBE@GT and our graduates will stand distinguished amongst peers around the world.

### Undergraduate Support

A Georgia Tech degree in chemical and biomolecular engineering is a foundation for lifelong success. Students have access to a world-class education and enrichment programs such as study abroad, internships, co-ops, lecture series, and professional development workshops that give them the advantage they need for a successful future in industry or academia.

Despite being a national leader in return on investment, we are losing extraordinary students to other institutions that can offer more robust financial aid packages.

We believe that there is no greater investment than our students, and so we seek philanthropic support in the form of endowed scholarships to help us attract the best and brightest. We also seek philanthropic resources to support student enrichment programs.



"The Mellichamp Scholarship came exactly when I needed it. It helped to cover many of my expenses, including books and transportation, during my third year at Georgia Tech. Additionally, this scholarship was one of the first awards I won at Georgia Tech so it was a great source of encouragement and a reminder that hard work is worth it!"

Shelbe Johnson, ChBE 2022  
Suzanne C. and Duncan A.  
Mellichamp Scholar





## Graduate Support

**Graduate students are the research engine of Georgia Tech as well as teachers of undergraduate students. They lend their creative energy and entrepreneurial tenacity to our community and are critical to both high-caliber research efforts and innovative undergraduate programs. They are also the pipeline to tomorrow's academic leadership.**

To accelerate the transformation of interdisciplinary research, innovative education, and the expansion of career pathways, the School seeks a portfolio of endowed fellowships that offer graduate students more latitude for collaborative research, greater access to internships and leadership training, and increased opportunities to learn effective communication and business skills.

In short, the best graduate students go where they are well-funded, and philanthropic support for graduate student fellowships offers distinct advantages over grant-restricted funding. Well-funded graduate students will more than repay the investment in their education with future success in industry, research, nonprofits, and academia. Their accomplishments are Georgia Tech's.



"The IBM fellowship provided me with opportunities that helped advance my career. The financial support allowed me to explore research areas aligned with my intellectual interests and also led to a summer internship at one of their top research centers. During the internship, I worked on challenging projects that involved applying machine learning to polymer science and chemical engineering."

Gabriel Sabença Gusmão  
IBM Fellow

### SUPPORT OUR PRIORITIES:

Your philanthropic investment can transform a student's life and provide unparalleled opportunities.

- **UNDERGRADUATE STUDENTS**  
ChBE Scholarship Funds...  
Gifts of Any Size

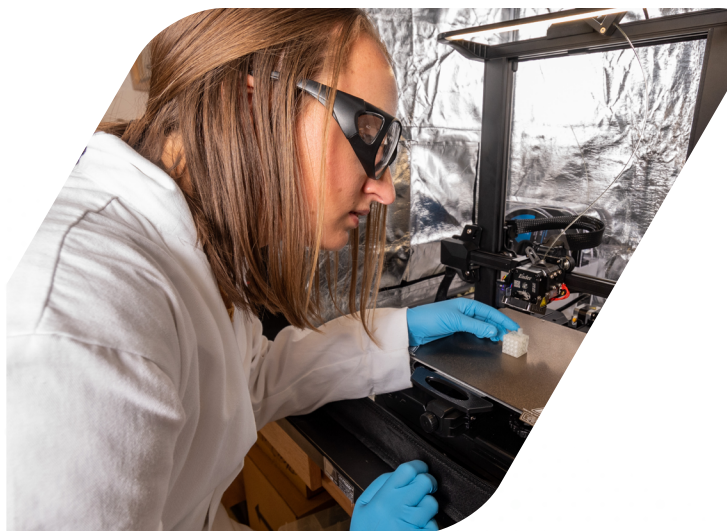
Named Scholarship  
Endowment...from \$100,000

Named Dean's Scholarship  
Endowment...from \$250,000

- **GRADUATE STUDENTS**  
ChBE Graduate Fellowship  
Funds...Gifts of Any Size

Named Fellowship  
Endowment...from \$100,000

Named Presidential Fellowship  
Endowment...from \$1,000,000







*The School of Chemical and Biomolecular Engineering prioritizes*

## Research Preeminence

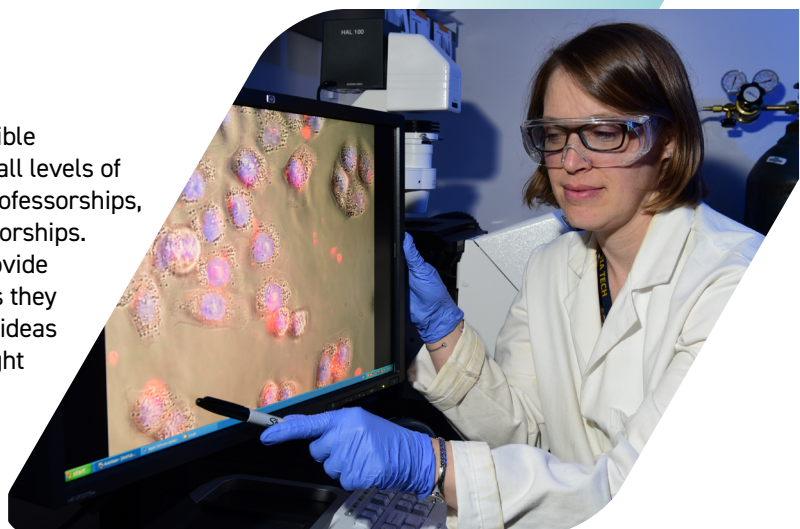
The world is looking to research universities for solutions, and ChBE@GT will be the global thought leader in chemical and biomolecular engineering. We will be sought out for our research preeminence, interdisciplinary collaboration, innovative spirit, and entrepreneurial acumen.

### Faculty Support

At the heart of Georgia Tech's drive to be known for innovation, collaboration, and integrity are its people. The human-centered nature of science, technology, and related fields includes how we conduct our research and our teaching, making our faculty the shepherds of the Institute's mission.

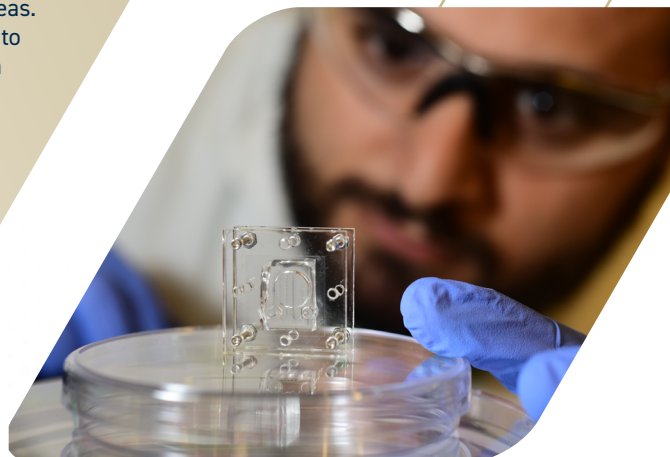
It is imperative that ChBE@GT be able to attract and retain exceptional faculty at all career levels to drive our research agenda, guide student development, and champion innovation.

Our School seeks flexible endowments to support all levels of faculty, from chairs to professorships, and early-career professorships. Philanthropic dollars provide our faculty the resources they need to pursue blue-sky ideas and emerge as the thought leaders, innovators, and entrepreneurs who will change our communities and our world.



"The collaborative and interdisciplinary environment at Georgia Tech has led to many new research ideas. Support from my endowed chair has allowed me to follow up on those ideas and generate initial data that has catalyzed new discoveries, launched major research grants, and brought forth new technologies. This type of flexible funding fuels creativity and innovation."

Dr. Mark Prausnitz  
Regents' Professor and Regents'  
Entrepreneur  
J. Erskine Love Jr. Chair in Chemical &  
Biomolecular Engineering





Georgia Tech College of Engineering

# School of Chemical and Biomolecular Engineering



## World-Class Facilities

To enable ChBE@GT to attract and retain the best and brightest students and researchers, we need facilities whose physical environment—with state-of-the-art laboratories and equipment—adapts to and inspires teaching, learning, and research for generations to come. An updated space will foster innovation and promote collaboration that will grow to meet the current and future needs of the school.

Our faculty and students can be found across campus participating in research that crosses traditional boundaries between disciplines to focus instead on collaborative efforts to achieve extraordinary outcomes. One such place is the Paper Tricentennial Building – historically the home for the Institute for Paper Science and Technology – and now home to the Renewable Bioproducts Institute.

The building's modernization would not only achieve heightened safety and

efficacy for Georgia Tech's largest wet lab space, but also lay the foundation upon which to build the next centers of excellence in chemical and material discovery in renewable resource development and beyond.

ChBE and RBI together seek philanthropic investment to achieve our shared vision to provide students with transformative learning experiences and serve as an anchor institution, partner, and catalyst of sustainable development.

## SUPPORT OUR PRIORITIES

Your philanthropic investment can transform the world by driving the research engine that will define and solve tomorrow's challenges.

- **FACULTY SUPPORT**

ChBE Faculty Funds...  
Gifts of Any Size

Term Faculty Fellowships...  
from \$50,000 over five years

Named Flexible Faculty  
Endowments...from  
\$500,000 to \$2 Million

- **RBI BUILDING RENOVATION**

Named Spaces Available...  
Please Inquire

